



Experience Builder Functionality: Button Widget

Overview

This training will go over the basics of the Button widget in Experience Builder.

Goal

The button widget is a simple widget but can be really helpful for linking out to different parts of your app or external links related to your content.

Finished Product (if applicable)

[Recording found here!](#)

The button widget has different options for linking depending on where it is placed.

1. Open a blank scrolling Experience Builder
2. Add a header to your app and change the color if you would like
3. Bring a button widget into your blank fullscreen app

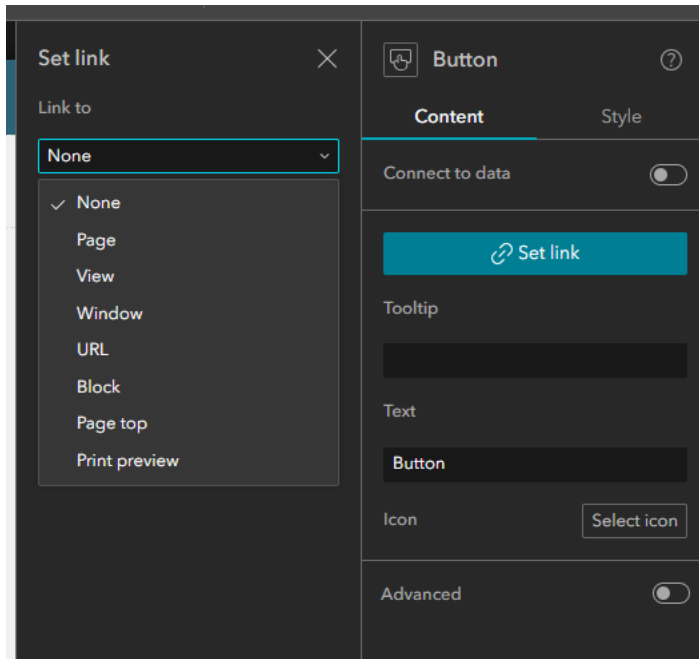
In a scrolling page app, a block gets automatically created when you bring any widget into the page. A block is how scrolling pages are organized. A block is a row widget that takes up the entire width of the screen.

Linking

4. Click the Button to open the configuration panel on the right side
5. Click 'Set Link' and open the dropdown for the "Link to:"

You can use the button to:

- Link to another page in your app
- Link to a view within a section
- Open a window
- Link to an external URL
- Link to a block in a scrolling page
- Link to return to the top of the page in a scrolling page
- Open a print preview

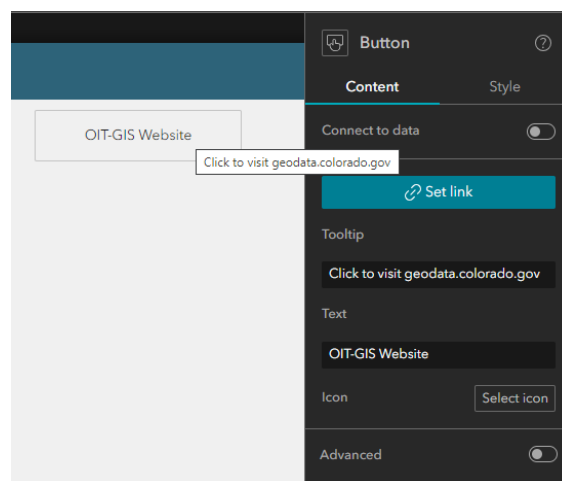


**A note on scrolling page apps*

Buttons are a great tool for mimicking a menu in a scrolling page. Adding buttons to a header that stays at the top of a scrolling page that are linked to certain blocks can help your users quickly navigate to a certain section of your app without having to scroll.

Button Design

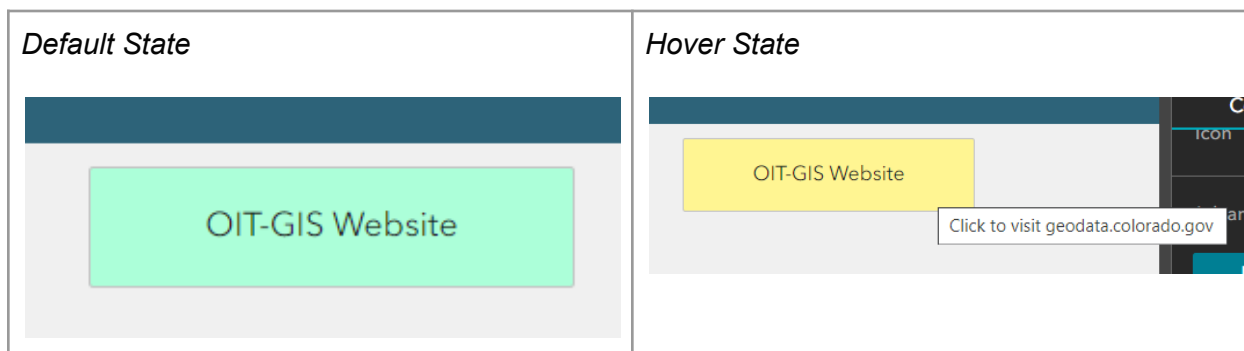
6. Update the 'Text' box in the configuration panel to change the text that displays on the button
7. Additionally, fill out the 'Tooltip' text box to add a tool tip for when a user hovers over the button



8. Toggle the 'Advanced' option on

Here you can change the design of the button in the default state and when users hover over the button. You can change the color of the button, the border, and add a shadow.

9. Change the background color in the default state
10. Click the 'Hover' tab
11. Change the background color to something different than you chose in the default state
12. Turn on live view and watch how the design of the button changes as you move your mouse over and off it



Adding details to the design of your buttons can help direct the focus of your site/app.

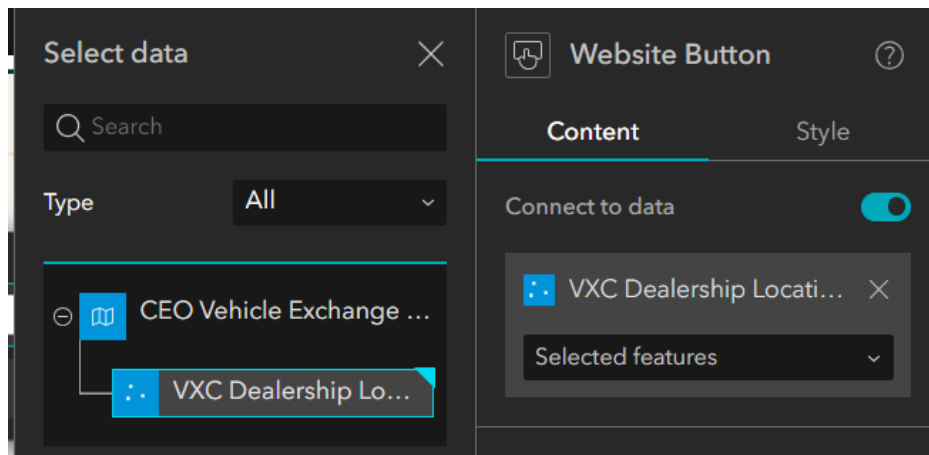
Connecting to Data

You can also use buttons to link out to external URLs using attributes or expressions derived from attributes. For example, if your layer has an attribute that holds a website URL, you can set the button to visit the associated website attribute of the selected feature.

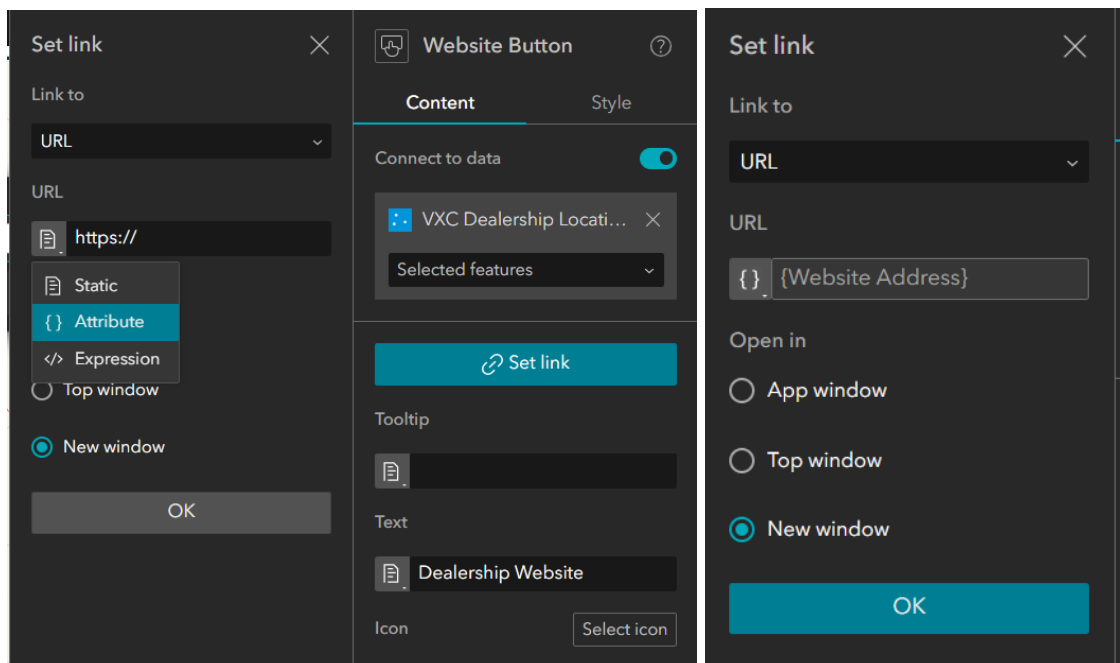
The screenshots below outline this process for a layer that shows car dealership locations and has an attribute called 'Website Address'. When a feature is selected in the map, clicking the button 'Dealership Website' will take you to the associated website.

1. In the button configuration, toggle on 'Connect to data'
2. Select your layer that has an attribute that contains a URL
3. Make sure that the drop down below the layer is set to 'Selected features' and not default

This will ensure that the link will change depending on which feature the user selects in the map.



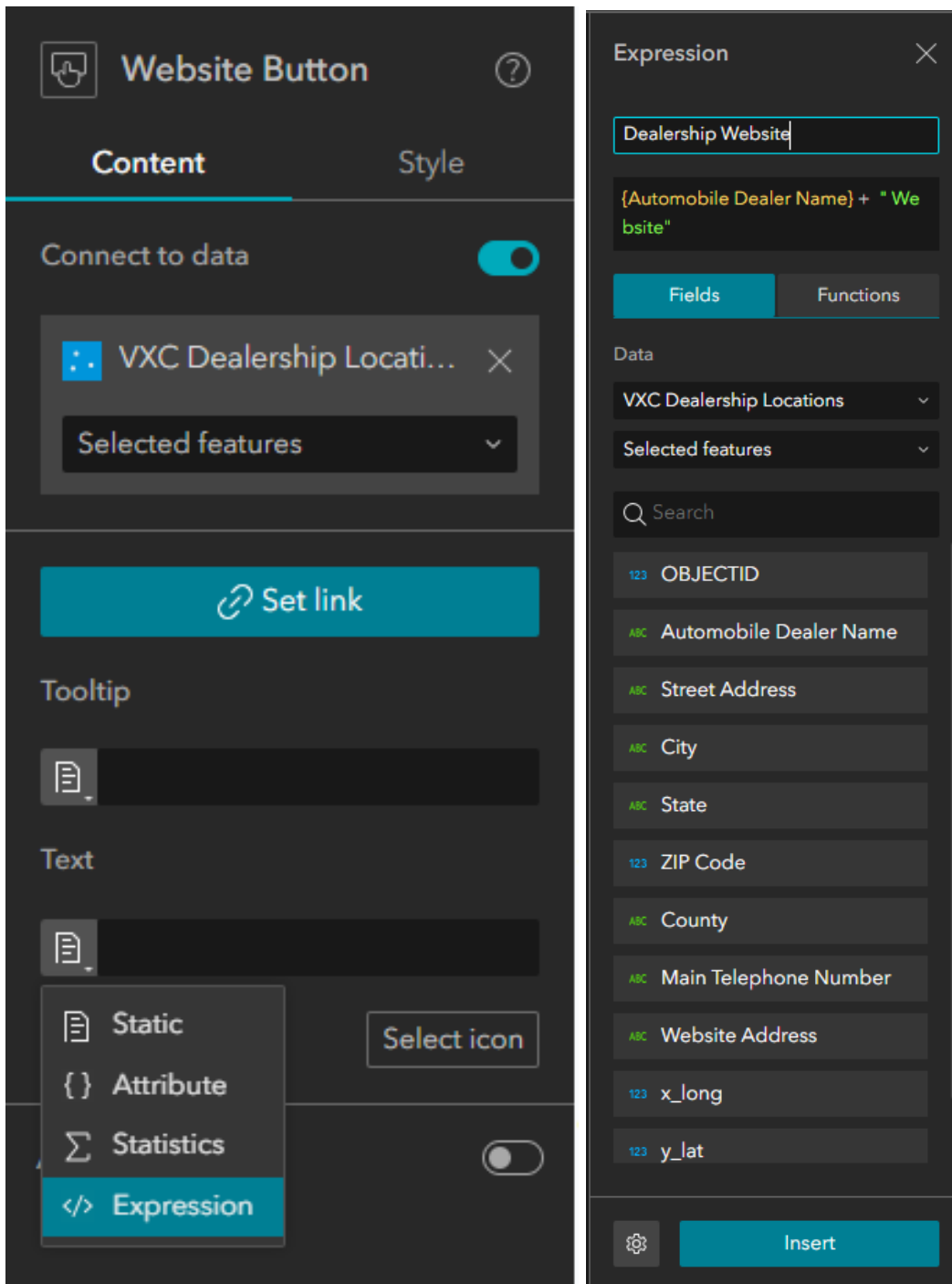
4. Select URL from the 'Link to' dropdown
5. Click the page icon on the left of URL
6. Select 'Attribute' and choose the attribute in your layer that contains the website URL



7. Choose the file icon by under 'Text'

8. Choose 'Expression'

Adding an expression to the 'Text' box can make the displayed text in the button change depending on the feature selected.





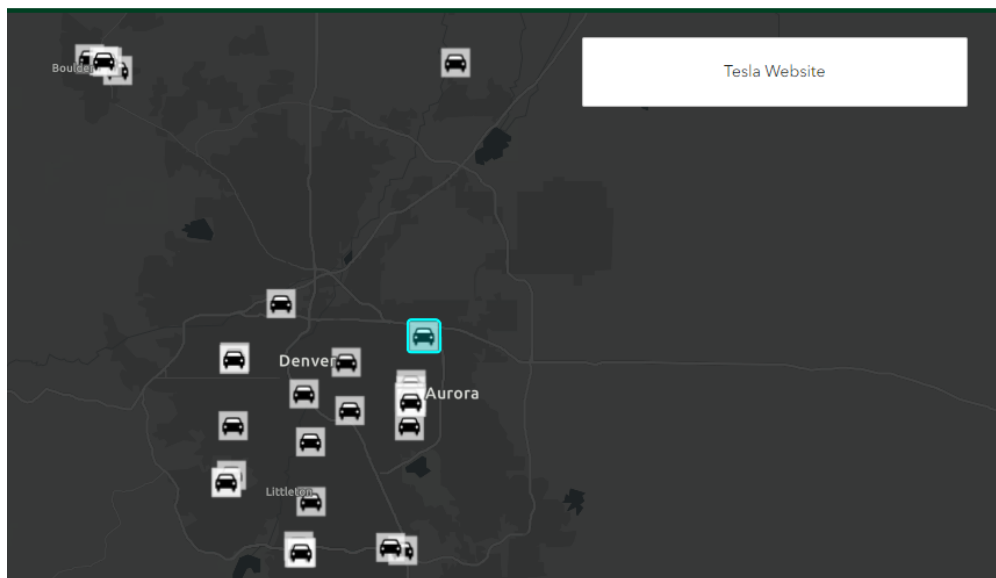
The name of the expression will be the text the button shows as default when there are no features selected. The expression above displays the name of the selected dealership and the word 'website' in the button when a feature is selected.

The resulting app will have the following functionality. When a feature is selected and you click the button, it will take you to that dealership's website.

Button in the default state with no features selected



Button text changes to reflect the dealership name + 'Website' when a feature is selected





The button widget is a small and simple widget that has the power to enhance the design and functionality of your Experience Builder apps. For more information, visit the [Esri Button Widget documentation](#).

As always, if you have any questions, reach out to us at oit_gis@state.co.us!